

/Handrails/

/Mild Steel/

We offer a selection of mild steel and cast iron handrails, a small selection of which can be seen below.

Edge Hammered
with Double Groove



18/1 40 x 8
18/2 40 x 10
18/3 40 x 12

Floral



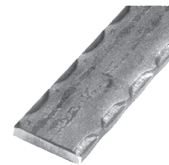
18/4 40 x 8
18/5 40 x 10
18/6 40 x 12

Dalmation



18/7 40 x 8
18/8 40 x 10
18/9 50 x 10
18/10 50 x 12

Edge Hammered



18/11 25 x 6
18/12 25 x 10
18/13 40 x 8
18/14 40 x 10
18/15 50 x 10
18/16 50 x 12

Wavy



18/17 20 x 8
18/18 25 x 10
18/19 40 x 8
18/20 40 x 10
18/21 40 x 12
18/22 50 x 10
18/23 50 x 12

Grooved



18/24 20 x 6
18/25 25 x 6

Victorian



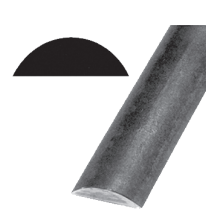
18/26 50 x 15

European



18/27 40 x 18

Convex

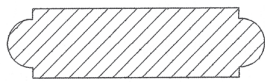


18/28 25 x 8
18/29 30 x 10
18/30 40 x 10
18/31 50 x 10

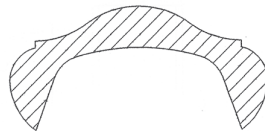
/Handrails/



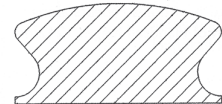
METALCRAFT
Architectural Metalwork



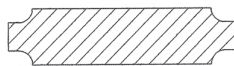
A 551
Length 1500



A 552
Length 1188



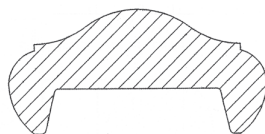
A 553
Length 1307



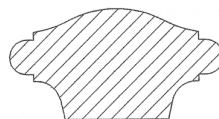
A 554
Length 1817



A 555
Length 1188



A 556
Length 1487



A 557
Length 1930



A 558
Length 1334

Cross-section diagrams of cast iron handrails are approximately half full size